

## Video Article

# Rearing and Double-stranded RNA-mediated Gene Knockdown in the Hide Beetle, *Dermestes maculatus*

Jie Xiang<sup>1,2</sup>, Katie Reding<sup>1</sup>, Leslie Pick<sup>1,2</sup><sup>1</sup>Entomology Department, University of Maryland<sup>2</sup>Program in Molecular and Cell Biology, University of MarylandCorrespondence to: Leslie Pick at [lpick@umd.edu](mailto:lpick@umd.edu)URL: <http://www.jove.com/video/54976>DOI: [doi:10.3791/54976](https://doi.org/10.3791/54976)Keywords: RNAi, gene knockdown, insect, beetle, *Dermestes maculatus*, segmentation, pair-rule gene, embryo microinjection, dsRNA, evo-devo

Date Published: 9/29/2016

Citation: Xiang, J., Reding, K., Pick, L. Rearing and Double-stranded RNA-mediated Gene Knockdown in the Hide Beetle, *Dermestes maculatus*. *J. Vis. Exp.* (), e54976, doi:10.3791/54976 (2016).

## Abstract

Advances in genomics have raised the possibility of probing biodiversity at an unprecedented scale. However, sequence alone will not be informative without tools to study gene function. The development and sharing of detailed protocols for the establishment of new model systems in laboratories, and for tools to carry out functional studies, is thus crucial for leveraging the power of genomics. Coleoptera (beetles) are the largest clade of insects and occupy virtually all types of habitats on the planet. In addition to providing ideal models for fundamental research, studies of beetles can have impacts on pest control as they are often pests of households, agriculture, and food industries. Detailed protocols for rearing and maintenance of *D. maculatus* laboratory colonies and for carrying out dsRNA-mediated interference in *D. maculatus* are presented. Both embryonic and parental RNAi procedures—including apparatus set up, preparation, injection, and post-injection recovery—are described. Methods are also presented for analyzing embryonic phenotypes, including viability, patterning defects in hatched larvae, and cuticle preparations for unhatched larvae. These assays, together with *in situ* hybridization and immunostaining for molecular markers, make *D. maculatus* an accessible model system for basic and applied research. They further provide useful information for establishing procedures in other emerging insect model systems.

## Video Link

The video component of this article can be found at <http://www.jove.com/video/54976/>

## Introduction

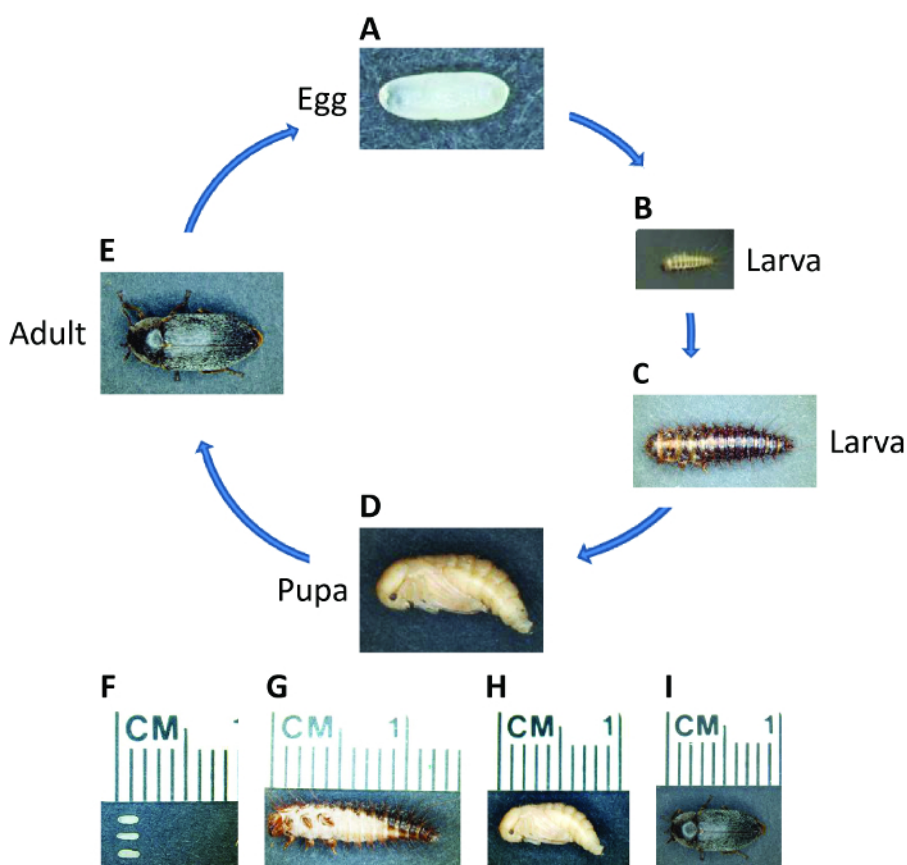
In 1998, (the deleted) Fire and Mello (labs deleted) reported that double-stranded RNA (dsRNA) can induce inhibition of gene function in *Caenorhabditis elegans*<sup>1</sup>. This response triggered by dsRNA was named RNA interference (RNAi), and such RNAi-mediated gene silencing was reported to be conserved in animals, plants, and fungi<sup>2-7</sup>. In plants and some animals, RNAi functions systemically, meaning that the effect can spread to other cells/tissues where dsRNA is not directly introduced (reviewed in<sup>8-10</sup>). Scientists have made use of this endogenous cellular RNAi response by designing dsRNAs to target genes of interest, thereby knocking down gene function without directly manipulating the genome (reviewed in<sup>11-14</sup>).

RNAi is a powerful tool for functional studies due to the following advantages. First, even with minimal gene sequence information, a gene can be targeted using RNAi. This is especially important for studies of non-model organisms lacking genomic or transcriptomic data. Second, in organisms where the RNAi response is robustly systemic, RNAi-mediated gene knockdown can be performed at almost any developmental stage. This feature is very useful for studying the function of pleiotropic genes. Third, in some cases, RNAi effects spread to the gonads and progeny, such that phenotypes are observed in offspring<sup>15,16</sup>. This phenomenon, known as parental RNAi (pRNAi), is especially advantageous for genes impacting embryonic development, as numerous offspring produced by a single injected parent can be examined without direct manipulation of eggs. For these reasons, pRNAi is the method of choice. However, if pRNAi is ineffective, for example for genes required for oogenesis, then embryonic RNAi (eRNAi) must be used. Fourth, RNAi can be used to generate the equivalent of an allelic series in that the amount of dsRNA delivered can be varied over a range to produce weak to strong defects. Such a gradation of phenotypes can be helpful for understanding gene function when the gene is involved in a complex process and/or complete loss of function is lethal. Fifth, delivery of dsRNA is generally easy and feasible, especially in animals showing robust systemic RNAi responses. dsRNA can be introduced by microinjection<sup>1,5</sup>, feeding/ingestion<sup>17,18</sup>, soaking<sup>19,20</sup>, [comma added] and virus/bacteria-mediated delivery<sup>21,22</sup>. Sixth, unlike some gene targeting/editing methods, there is no need to screen for organisms carrying the mutation or to carry out genetic crosses to generate homozygotes when using RNAi. Therefore, compared to many other techniques for studying gene function, RNAi is fast, inexpensive, and can be applied for large-scale screens<sup>23-25</sup>.

The broad utility of RNAi provides a means [from "mean"] to carry out functional studies in a wide range of organisms, expanding the range of species available for study beyond the traditional model systems for which genetic tools have been developed. For example, studies using non-model systems are required to give insights into the evolution of genes and gene networks by comparing the functions of orthologs from species representing different development modes or exhibiting distinct morphological features<sup>26-29</sup>. These types of studies will provide a better understanding of biological diversity, with impacts for both applied and basic research.

Being the largest animal group on the planet, insects provide a great opportunity to explore the mechanisms underlying diversity. Additionally, insects are generally small, have short life cycles, high fecundity, and are easy to rear in the lab. In the past two decades, RNAi has been successfully applied in insects spanning orders, including Diptera (true flies)<sup>5</sup>, Lepidoptera (butterflies and moths)<sup>30</sup>, Coleoptera (beetles)<sup>16,31</sup>, Hymenoptera (sawflies, wasps, ants and bees)<sup>32</sup>, Hemiptera (true bugs), Isoptera (termites)<sup>34</sup>, Blattodea (cockroaches)<sup>35</sup>, Orthoptera (crickets, grasshoppers, locusts, and katydids)<sup>36</sup> and Phthiraptera (lice)<sup>37</sup>. Successful application of RNAi has provided functional data for studies of patterning in early embryogenesis (anterior-posterior axis<sup>32</sup>, dorsal-ventral axis<sup>28</sup>, segmentation<sup>26,38</sup>), sex determination<sup>39,40</sup>, chitin/cuticle biosynthesis<sup>41</sup>, ecdysone signaling<sup>42</sup>, social behavior<sup>43</sup>, and more. RNAi methods developed for different insect species may be of additional benefit in that they are likely to be useful for pest control (reviewed in<sup>44-46</sup>). RNAi effects will be gene-specific as well as species-specific, as long as non-conserved regions are chosen for targeting. For beneficial insect species like honeybees and silkworms, targeting genes vital for the survival of viruses or parasites to control infection may provide a novel strategy to protect these species<sup>47,48</sup>.

*Dermestes maculatus* (*D. maculatus*), common name hide beetle, is distributed worldwide except for Antarctica. As a holometabolous insect, the *D. maculatus* life cycle includes embryonic, larval, pupal, and adult stages (Figure 1). Because it feeds on flesh, *D. maculatus* is used in museums to skeletonize dead animals and forensic entomologists can use it to estimate time of death<sup>49,50</sup>. *D. maculatus* feeds on animal products including carcasses, dried meat, cheese, and the pupae/cocoons of other insects and thus causes damage to households, stored food, and the silk, cheese, [comma added] and meat industries<sup>51,52</sup>. Applying RNAi in this beetle could provide an efficient and environmentally friendly way to minimize its economic impact. Our lab has used *D. maculatus* as a new model insect to study segmentation<sup>53</sup>. In addition to being amenable to lab rearing, *D. maculatus* is of interest for basic research as it is an intermediate-germ developer, making it a useful species to study the transition between short- and long-germ [space removed] development.



**Figure 1: Life cycle of *D. maculatus*.**

Photographs of *D. maculatus* at different life stages, as indicated. The life cycle from egg to adult takes three weeks at 30 °C but longer at lower temperatures. (A, F) Freshly laid embryos are white to light yellow and oval, approximately 1.5 mm in length. Embryogenesis takes ~55 hr [from h] at 30 °C. (B, C and G) Larvae have dark pigmented stripes and are covered with setae. Larvae go through several instars depending on the environment and their length can extend up to over 1 cm. (D, H) Young pupae are light yellow. Pupation takes ~ 5 - 7 days at 30 °C. (E, I) Shortly after eclosion, dark pigmentation appears over the adult beetle body. Adults can live up to several months and one female can lay hundreds of embryos over her lifetime. [Please click here to view a larger version of this figure.](#)

Previously, we showed that RNAi is effective in knocking down gene function in *D. maculatus*<sup>53</sup>. Here our experience rearing *D. maculatus* colonies in the laboratory is shared along with step-by-step protocols for both embryonic and parental RNAi set-up, injection, post-injection care, and phenotypic analysis. The dsRNA-mediated gene knockdown and analysis methods introduced here not only provide detailed information for addressing questions in *D. maculatus*, but also have potential significance for applying RNAi in other non-model beetle/insect species.

## Protocol

### 1. Rearing of *D. maculatus*

NOTE: A breeding colony of *D. maculatus* was set up in the authors' lab using adults and larvae purchased commercially. The species identity was verified using DNA barcoding<sup>53</sup>.

- To set up a new cage in the lab, spread a thin layer of wood shavings into a medium-size insect cage (30.5 x 19 x 20.3 cm<sup>3</sup> [from cm]). Place a ~ 10 x 6 x 3 cm<sup>3</sup> chunk of Styrofoam in the cage to let larvae hide for pupation. Add 20 - 50 beetles (either adults or late instar larvae). Beetles will hide in the wood shavings.
- Add wet cat food in a petri dish or a weighing boat. Cover the cage with mesh cloth and place the cage in an incubator.
- For maintaining a breeding colony in the lab, set the temperature between 25 and 30 °C. *D. maculatus* grows faster at higher temperatures, but this also promotes the growth of fungus and mites. To maintain a healthy colony, use 25 - 28 °C for regular stock maintenance and 30 °C for rapidly expanding the colony. The life cycle takes approximately three weeks to four months depending on environmental factors<sup>50</sup> (Figure 2).



**Figure 2: *D. maculatus* Lab Colony.**

Photograph of a typical *D. maculatus* insect cage is shown. Wood shavings are spread to let the beetles hide. Cat food is added in a small petri dish or weighing boat. Styrofoam is placed into the cage as a refuge for final instar larvae to pupate. The cage shown here is 30.5 x 19 x 20.3 cm<sup>3</sup> and houses a few hundred larvae, pupae, and adults. [Please click here to view a larger version of this figure.](#)

- Leave eggs in the cage to mature. To expand the colony, establish new cages with eggs (collected as described in Section 2), larvae, or adults, as above. *D. maculatus* lay eggs throughout the cage, especially near the food source.
- Replace wet cat food about twice a week.  
NOTE: Due to the unpleasant odor of wet cat food, alternative food sources were also tested (see Discussion).

### 2. Embryo Collection

- To set up a collection, separate at least 50 males and 50 females from the colony. Young adults are best. Place adults in a mini-sized cage (17.8 x 10.2 x 12.7 cm<sup>3</sup>) without wood shavings. Add cat food in a weighing boat.
- Before starting collection, check the cage carefully for any embryos present and remove them. Put a stretched cotton ball into the cage, and leave the cage in a 30 °C incubator. After the appropriate time window, the cotton ball will be ready for embryo collection.
- Fold a piece of black construction paper (A4 size) in half to create a crease, and then unfold.
- Remove the stretched cotton ball from the cage. Remove adults from the cotton ball and put them back into the cage.
- While pinching the stretched cotton ball very gently, tear it apart slowly into thin cotton filaments to let the eggs fall onto the black paper.  
NOTE: *D. maculatus* embryos are fragile and hard to see in cotton. They can be easily crushed if holding the cotton ball too firmly.

### 3. dsRNA Preparation

- DNA Template Preparation for dsRNA Synthesis**
  - Run 4 - 6 50 µl PCR reactions using primers containing T7 promoter sequences at both 5' ends to amplify DNA template according to manufacturer's protocol.

2. Purify PCR product using a commercial PCR purification kit, following manufacturer's instructions. The ideal final concentration of DNA template is  $\geq 100$  ng/ $\mu$ l.
2. **Injection Buffer Preparation**
  1. Prepare 100 ml of injection buffer (0.1 mM NaH<sub>2</sub>PO<sub>4</sub>, 5 mM KCl). Adjust pH to 6.8 with 5 M NaOH.
  2. Store aliquots at -20 °C.
3. **dsRNA Synthesis**
  1. Set up a reaction in a 0.2 ml PCR tube on ice and carry out an *in vitro* transcription reaction with T7 polymerase, following manufacturer's instructions, using  $\sim 500$  ng template per reaction.
  2. Incubate the tube at 37 °C overnight.
  3. Digest the DNA template with DNase, following manufacturer's instructions.
  4. Heat the tube to 94 °C and hold at 94 °C for 3 min.
  5. To anneal the dsRNA, slowly cool the tube by 1 °C/min until it reaches 45 °C after 1 hr.  
NOTE: Steps 3.3.2 through 3.3.5 can be performed in a thermocycler.
  6. To ethanol precipitate dsRNA, add 280  $\mu$ l of RNase free water to 20  $\mu$ l of reaction to adjust to a final volume of 300  $\mu$ l. Add 30  $\mu$ l of 3 M NaOAc (pH 5.2) and 650  $\mu$ l of ethanol. Place tube in -20 °C freezer overnight.
  7. After centrifuging at 15,682 x g for 30 min at 4 °C, wash the dsRNA pellet with 70% ethanol. Dry pellet and dissolve in 20  $\mu$ l injection buffer.
  8. Measure the concentration of the dsRNA using a spectrophotometer at A<sub>260</sub>. The ideal concentration is 3 - 5  $\mu$ g/ $\mu$ l. Check the quality of the dsRNA by running 5  $\mu$ l of a 1:25 dilution (deleted dsRNA) on a 1% agarose gel at 90 V for 30 min. A single band of expected size will be readily visible.
  9. Store the dsRNA at -20 °C or colder.  
NOTE: For every RNAi knockdown experiment, include a control dsRNA, which would not be expected to impact the process being studied. *gfp* dsRNA is an excellent control for most experiments. Prepare and inject the control dsRNA side-by-side with the experimental dsRNA.

## 4. Assembly of Microinjector and Micromanipulator

NOTE: See Figure 3.

1. Connect nitrogen or other air supply to the pressure input of a pneumatic pump instrument. If a pneumatic pump is not available, apply pressure using a 50 ml syringe connected to fine tubing.
2. Connect a foot switch to the remote connector of the pump to control the eject pressure flow.
3. Attach a glass capillary holder to the eject pressure port of the pump with tube.
4. Fix the capillary holder on a micromanipulator close to a dissecting microscope.

## 5. Embryonic RNAi

NOTE: Figure 4 shows a flowchart of *D. maculatus* embryonic RNAi.

1. **eRNAi Preparation**
  1. Prepare an embryo collecting petri dish lid (90 mm diameter). Place a piece of black filter paper to cover the inside of the lid. Put a standard microscope slide on the black paper.
  2. Dilute dsRNA to appropriate concentration with injection buffer. Use 2 - 3  $\mu$ g/ $\mu$ l for initial experiments. Always keep dsRNA on ice prior to injection.
  3. Add food coloring at 1:40 dilution to the dsRNA and pipette gently several times to mix well.
2. **Collecting Embryos for Injection**

NOTE: At 25 °C, nuclei in embryos 6 - 8 hr After Egg Laying (AEL) migrate towards the egg periphery<sup>53</sup>. A cellular blastoderm is established within 8 - 10 hr AEL<sup>53</sup>. To ensure embryos prior to cellular blastoderm stage are used for injection, 0 - 3 hr AEL embryos are recommended for use<sup>53</sup>. Embryo collection, preparation, and injection usually take less than 2 hr if the glass capillaries are in good shape. Therefore, the whole process can be completed within 5 hr AEL.

  1. Collect embryos as described in steps 2.2-2.5.
  2. Tap the black construction paper to transfer embryos into collecting petri dish lid.
  3. Stick double-sided tape along the edge of the slide.
  4. Using a paint brush, align the embryos on the tape perpendicular to the slide edge with the anterior or posterior end at the edge. Note that the anterior and posterior ends of early embryos are not readily distinguishable, thus on average half will be injected at the posterior end which is ideal.
3. **Loading the dsRNA into the Glass Capillary**
  1. Take up 2 - 4  $\mu$ l of dsRNA into a 20  $\mu$ l microloader pipette tip.
  2. Insert the tip into a pre-pulled glass capillary (referred to as needle) and gently pipette the dsRNA solution into the capillary. Prepare needles from commercial glass capillaries using a micropipette puller. An example of an ideal pulled needle is shown in Figure 5. The length and taper of needles may need to be optimized after injection trials.
  3. Fix the glass capillary into the glass capillary holder.
  4. Assemble the capillary holder into the micromanipulator.
4. **Injecting dsRNA into Embryos**

1. Carefully transfer the slide with embryos onto the stage of the dissecting microscope.
2. Move the slide to bring one embryo to the center of the field and focus microscope.
3. Position the tip of the capillary with the micromanipulator while looking into the dissecting microscope. Bring the tip close to the end of the first embryo in the row.
4. Switch on the nitrogen or other air supply.
5. Set the solenoid input selector switch to vacuum.
6. Adjust the eject pressure regulator to 10 - 15 psi. Adjust the pressure depending on the apparatus.
7. Open the capillary if necessary. Once the tip is open, the colored dsRNA solution will fill the tip.
8. Move the capillary tip forward to puncture the embryo. If the pressure setting is ideal, no embryonic fluid will flow into the capillary.
9. Step on the foot switch to eject dsRNA solution into the embryo until an appropriate amount of solution is ejected. Figure 5 shows examples of embryo morphology after appropriate and inappropriate amounts of solution have been injected.
10. Keep the capillary tip inside the embryo for ~ 2 sec, and then remove it.
11. Move the capillary to the next embryo and repeat steps 5.4.8 - 5.4.10 until all embryos are injected. Change glass capillary if it gets clogged or breaks.

#### 5. Post-injection Recovery and Incubation

1. After injection, place the slide in a petri dish.
2. Add a wet cotton ball to the petri dish. Do not let the cotton ball touch the slide.
3. Cover the petri dish and wrap it with sealing film. Label the dish with the name of the dsRNA, concentration, date, time, and number of injected embryos.
4. Place the petri dish in a 30 °C incubator until the embryos hatch.

## 6. Parental RNAi

### 1. Isolating Pupae for pRNAi

1. Collect pupae from the colony.
2. Sort male and female pupae under microscope (see **Figure 6**). Keep them in two separate petri dishes in a 30 °C incubator to ensure that no mating occurs prior to injection.
3. Check every day for eclosed adults. Pupation usually takes 5 - 7 days at 30 °C.
4. Transfer eclosed males and females (see **Figure 6**) to two separate petri dishes and feed them cat food every other day until they are ready for injection.
5. Proceed to injection once there are enough females and males at appropriate age. Females 4 to 8 days post-eclosion are best. For a typical analysis, 8 - 12 females are used. An equal number of males are needed for mating<sup>54</sup>.

### 2. Injecting dsRNA into Female Abdomen

1. Prepare dsRNA on ice (5.1.2 and 5.1.3).
2. Attach a 32-gauge needle to a 10 µl syringe.
3. Anaesthetize females on CO<sub>2</sub> stage.
4. Load dsRNA solution into the syringe without taking up any air.
5. Hold a female ventral side up with one hand and hold the syringe with the other.
6. Gently penetrate the segmatoria (membrane) between sternites 2 and 3 with the tip of the needle. **Figure 7** shows a female during injection. If the needle does not penetrate the tissue easily, angle the needle upward and slowly press down. Insert approximately 2 mm of the needle into the body.
7. Check the syringe scale while slowly pushing the plunger, injecting ~ 2 µl per female.
8. After injecting, hold the needle still for at least 5 sec before removing it from the female's abdomen.
9. Transfer the injected females to a petri dish (90 mm diameter) and feed with cat food.
10. Label the petri dish with the dsRNA name, amount injected, date, and number of females.

### 3. Post-injection Recovery and Mating

1. Incubate the petri dish in a 30 °C incubator.
2. After 24 hr, transfer injected females to a mini cage.
3. Add to the cage an equal number of uninjected young males, and label the cage.
4. Add a weighing boat with cat food into the cage.
5. Leave the cage in a 30 °C incubator to allow mating. After 24 hr, females should start to lay eggs and embryos can be collected daily or at required time intervals.

## 7. Phenotypic Analysis after RNAi

NOTE: At 30 °C, it takes ~ 55 hr for eggs to hatch<sup>50</sup>.

### 1. eRNAi Viability Analysis

1. Calculate hatch rate by comparing the number of hatched larvae to the total number of injected embryos. Be sure to include a negative control injection as embryos may be harmed or killed by the injection procedure. Typical hatch rates vary from 30% - 60%. Beware of hatched larvae eating unhatched eggs.

### 2. pRNAi Viability Analysis



NOTE: If female viability is impacted by the gene targeted by RNAi, females injected with specific dsRNA but not negative control dsRNA will begin to die. If egg production or egg laying is impacted, females will exhibit partial or complete sterility. Score female survival compared to negative controls or compare total number of eggs laid by experimental and control females (7.2.3).

1. Set up embryo collection following step 2.2.
2. After 24 hr, collect embryos following steps 2.4 - 2.5.
3. Count the total number of the embryos.
4. Transfer the embryos to a 90 mm petri dish. Label the petri dish with the gene targeted, collection date, and number of embryos.
5. Incubate the embryos in a 30 °C incubator until they hatch. Since hatched larvae feed on unhatched embryos, check the petri dish frequently and separate hatched larvae from unhatched embryos using forceps (see Discussion).
6. Count the number of hatched embryos and calculate the hatch rate.

### 3. Examining Cuticle Defects in Hatched Larvae

1. Collect hatched larvae in a 1.5 ml microcentrifuge tube.
2. In a fume hood, add 1 ml of Fixation Solution.
3. Leave the microcentrifuge tube at 4 °C at least overnight to let the solution penetrate the larval tissue.
4. To visualize, remove as much fixative from the tube as possible.
5. Rinse larvae at least three times with PBST.
6. Transfer larvae to a multi-well glass plate with PBST using a P-1000 [from 1,000; to make consistent] pipette tip with the end cut off to widen it.
7. Under a dissecting microscope, stretch larvae using forceps to examine defects. It is critical to stretch out larvae to examine defects as their bodies contract in fixative.

### 4. Examining Cuticle Defects in Unhatched Larvae

Note: This procedure is useful for examination of early embryonic phenotypes, especially for embryos that do not survive to hatching.

1. For pRNAi, add PBST into the petri dish (7.2.4) and transfer unhatched embryos to a 1.5 ml microcentrifuge tube using a P-1000 pipette tip with the end cut off. For eRNAi, add PBST into the petri dish (5.5.4), brush unhatched embryos off the microscope slide and transfer them to a microcentrifuge tube.
2. Fix the embryos with Fixation Solution and rinse them with PBST for visualization following steps 7.3.2 - 7.3.6.
3. Using forceps, dissect embryos out of the eggshell under a dissecting microscope in PBST.
4. Transfer the embryos back to 1.5 ml microcentrifuge tube (~ 200 µl of embryos in each tube).
5. Remove as much solution as possible.
6. Add 1 ml of 90% lactic acid/10% EtOH. Leave the centrifuge tube in a 60 °C incubator at least overnight.

NOTE: Embryos can be left at 60 °C for several days.

7. To mount the embryos, pipette them onto a microscope slide using a P-1000 pipette tip with the end cut off.
8. Manually position the embryos with forceps to an ideal orientation.
9. Cover the embryos with a cover-slip and visualize under microscope using DIC.

### 5. Examining Cellular and Molecular Defects

NOTE: This procedure is useful for investigating the underlying causes of cuticle phenotypes or lethality that is not accompanied by cuticle defects.

1. For pRNAi, separate embryos from cotton balls at appropriate development stage and transfer them into an embryo collecting basket. The collection basket can be the same or similar to that used for *Drosophila* embryo collections.
  1. Make the egg basket from a 25 ml plastic scintillation vial with the bottom of the vial removed, and a circle cut out of the lid (roughly 1 cm diameter). Place a circle of super fine mesh about 2.5 cm in diameter inside the lid, and then screw the scintillation vial on and use upside-down.
  2. As the mesh can be easily removed once the embryos are washed, immerse the mesh in a microcentrifuge tube with water to recover any embryos sticking to the mesh.
2. For eRNAi, at appropriate stage, add PBST to the petri dish. Brush the embryos off the microscope slide and transfer them to an embryo collecting basket.

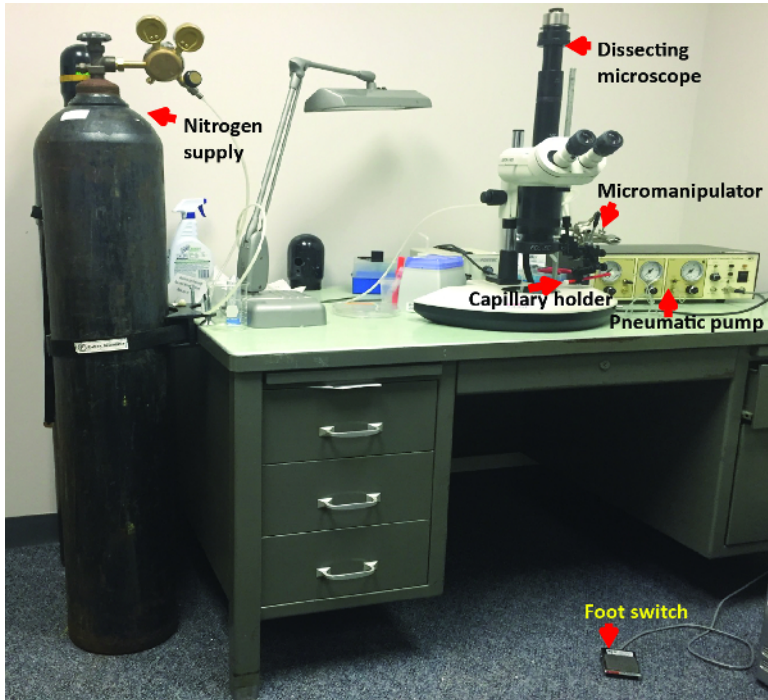
NOTE: Fixation, *in situ* hybridization, antibody staining, and nuclear staining protocols can be found in Xiang *et al.* 2015<sup>53</sup>

## Representative Results

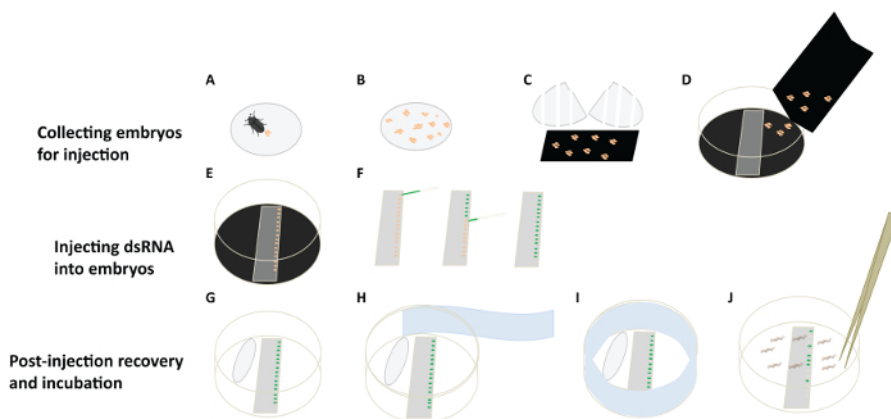
The authors' lab has used RNAi technology to study the functional evolution of genes regulating segmentation in insects<sup>53,55</sup>. While all insects are segmented, the genes regulating this process appear to have diverged during insect radiations<sup>26,38,56-63</sup>. Genetic screens in *Drosophila* identified a set of nine pair-rule segmentation genes that are responsible for promoting the formation of body segments<sup>64-70</sup>. Here, the ortholog of one of these genes, *paired* (*prd*), is used to document the utility of RNAi for studying gene function in *D. maculatus*.

eRNAi and pRNAi were each effective in demonstrating roles for *Dmac-prd* in segment formation in this species. 2 - 3 µg/µl of dsRNA designed to target *Dmac-prd* (Figures 8B, 8D and 8F) was compared to *gfp* dsRNA, injected as negative control (Figures 8A, 8C and 8E).

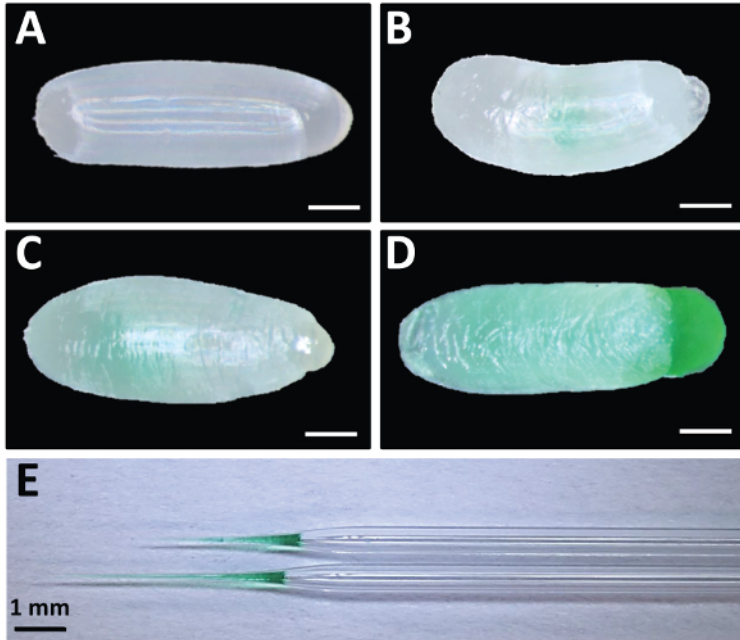
Control offspring hatched with one pigmented stripe per segment. Neighboring pigmented stripes were separated by a non-pigmented gap (**Figure 8A**). After *prd* pRNAi, affected offspring hatched with fused neighboring pigmented stripes, indicating segmental boundaries were defective (**Figure 8B**). Depending on phenotypic severity, one or several fusions were detected in affected larvae. Nevertheless, fusions consistently appeared at the boundary regions between T2/T3, A1/A2, A3/A4, A5/A6, A7/A8, indicating pair-rule-like defects. Cuticle phenotypes after *prd* knockdown showed loss of abdominal segments as well as shortened body length (**Figure 8D**). Engrailed (En) antibody staining was performed to examine molecular defects in early embryos after *prd* knockdown. While control embryos showed striped En expression with equal intensity in every segment (**Figure 8E**), reduced En expression was detected in alternate stripes in offspring from *Dmac-prd* dsRNA injected females (asterisks in **Figure 8F**). The pattern of reduced En expression is consistent with the defective cuticle pattern observed in affected hatched larvae. For more detailed results of phenotypes after *prd* knockdown in *D. maculatus*, see Xiang *et al.* 2015<sup>53</sup>.



**Figure 3: Injection Apparatus.** Photograph of the dissection microscope and micromanipulator used to inject *D. maculatus* embryos is shown. Nitrogen supply is connected to the pressure input port of a pneumatic pump. Glass capillary holder is connected to the eject pressure port of the pump. Foot switch is connected to the pump. [Please click here to view a larger version of this figure.](#)



**Figure 4: A Flowchart for *D. maculatus* Embryonic RNAi.** (A-D) Collecting embryos for injection. Females lay embryos (orange) in cotton balls (grey circle). Separate embryos from cotton balls and let them drop onto a piece of black construction paper. White bars indicate tears in cotton ball. Transfer embryos to a collecting petri dish lid, lined with black paper. (E, F) Injecting dsRNA into embryos. Align embryos on slides on double stick tape and inject them individually under a dissection microscope. Needle with green food dye is shown. (G-J) Post-injection recovery and incubation. Place a wet cotton ball in the petri dish to provide humidity. Cover the petri dish and wrap it with sealing film (light blue). Place the petri dish in an incubator and remove hatched larvae for phenotypic analysis. [Please click here to view a larger version of this figure.](#)



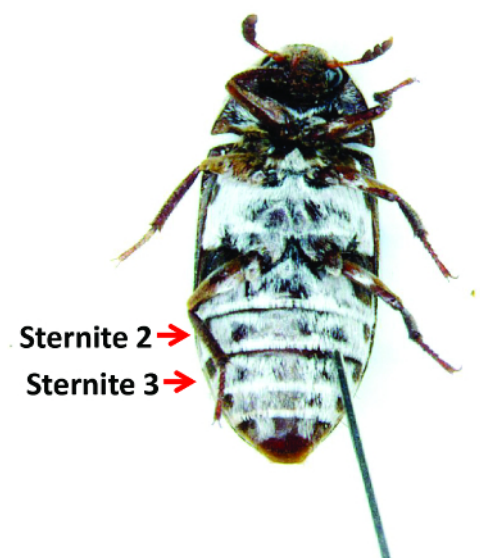
**Figure 5: Good vs. Bad Embryonic Injection Examples.**

(A) Uninjected embryo. (B) Embryo injected with too little dsRNA. (C) Embryo injected with appropriate amount of dsRNA. (D) Broken embryo with overflowing dsRNA caused by over-injection. Food coloring was added to dsRNA for visualization. (E) Examples of pulled capillary tubes used as needles for injection. Note the taper and tip length for two examples of functional needles. Scale bars for A-D represent 200  $\mu\text{m}$ . [Please click here to view a larger version of this figure.](#)

DOI: 10.3791/53111

**Figure 6: Male and Female Adults and Pupae.**

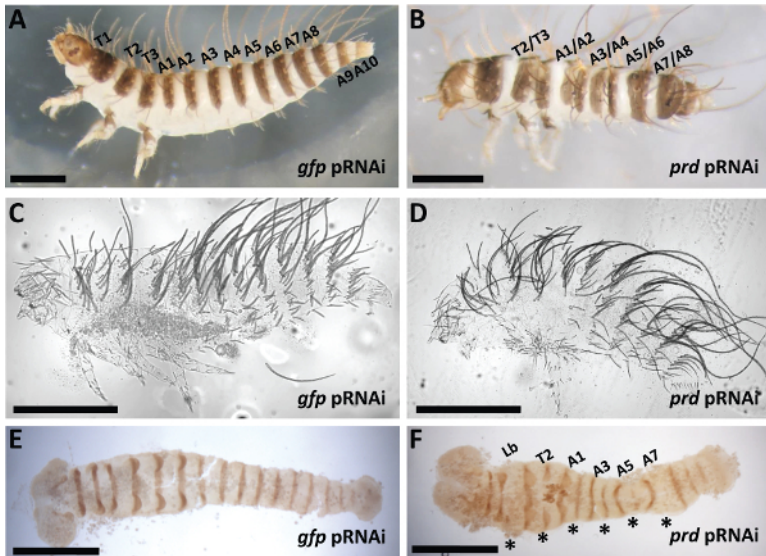
(A) Ventral view of a male pupa. (A') Magnification of posterior part of A. (A'') Illustration of male pupa genitalia. (B) Ventral view of a female pupa. (B') Magnification of posterior part of B. Female pupae have two genital papillae (white arrows). (B'') Illustration of female pupa genitalia. (C) Ventral view of a male adult. (C') Magnified view of posterior part of C. Note that male adults have trident-like genitalia and a circular lobe-like structure on the 4<sup>th</sup> sternite (white and black arrows, respectively). (D) Ventral view of a female adult. (D') Magnified view of posterior part of D. For all panels, scale bars indicate 1 mm. For details, see Xiang *et al.* 2015<sup>53</sup>. [Please click here to view a larger version of this figure.](#)



**Figure 7: A Female during Injection.**

Females are anesthetized and placed ventral side up. A needle penetrating the segmacoria between the 2nd and 3rd sternites to inject dsRNA is shown. [Please click here to view a larger version of this figure.](#)





**Figure 8: Representative Phenotypes after *Dmac-prd* pRNAi.**

(A) Control injection. Lateral view of a hatched wild-type-like *gfp* pRNAi offspring with three thoracic segments and ten abdominal segments. Each segment has setae and pigmented stripes. (B) Lateral view of a hatched *prd* pRNAi offspring. The gap between labeled neighboring pigmented stripes is narrowed or completely missing. (C) Cuticle phenotype of an unhatched control wild-type-like embryo. (D) Cuticle phenotype of an unhatched *prd* pRNAi offspring with fewer abdominal segments. (E,F) Dissected germband from: (E) Control, *gfp* pRNAi has evenly expressed En in every segment, (F) *prd* pRNAi, En expression is reduced in alternate segments (asterisks). For all panels, scale bars indicate 500  $\mu$ m. [Please click here to view a larger version of this figure.](#)

## Discussion

While a small number of sophisticated model systems (mice, flies, worms) were developed during the 20<sup>th</sup> century, the 21<sup>st</sup> century has seen a wave of new animal systems being developed in labs throughout the world. These new systems allow scientists to address comparative, evolutionary questions that cannot be probed using only the 'standard' model systems. This deployment of new models requires the rapid development of methods for lab culturing, gene identification, and functional approaches in new species. Here, procedures for rearing *D. maculatus* in the lab and step-by-step protocols for embryonic RNAi, parental RNAi, and phenotypic analysis in this beetle were presented. The goal is that these descriptions encourage others to use *D. maculatus* in their own experiments and to make use of the approaches presented here to develop additional new model species.

While *D. maculatus* lab colonies are incredibly easy to maintain, one limitation of rearing this species is the unpleasant odor of the wet cat food given to the beetles as their source of food. To avoid this, alternative foods such as whey/soy protein powder, cheese, ground dog food, and [from "or"] powdered milk were tested, supplied with or without wet cotton to alter humidity. Ground dog food was the most effective alternative and can be used for regular colony feeding. Survival was excellent (> 90%) from egg to adult in cages reared on just dry dog food in 80% relative humidity, with or without wet cotton added. However, supplementing this diet with wet cat food when collecting eggs to increase fecundity may be necessary when collecting large numbers of eggs. If dog food is used, old food should be removed regularly, as conditioned dog food was found to inhibit egg laying<sup>54</sup>. Dog food kibbles (K.R., preliminary results), cork, wood, paper, and other materials can also be used as refuges<sup>71</sup>. Interestingly, biodegradation of Styrofoam using mealworm beetle larvae has been reported<sup>72</sup>. Therefore, this was tested for *D. maculatus* larvae. Young *D. maculatus* larvae survived until adulthood with only Styrofoam or asbestos-containing materials and wet cotton (data not shown) but whether they eat and digest those materials remains to be determined.

This report is the first detailed protocol for carrying out functional genetic studies in *D. maculatus*. The use of RNAi here represents an expansion of this technique to a new model system. Several specific observations are worth noting with respect to RNAi knockdown experiments in *D. maculatus* and other non-model species. First, to guarantee that RNAi will be effective in *D. maculatus*, the same strain of *D. maculatus* used here should be employed. There is evidence from *Tribolium castaneum* that different strains show variation in RNAi phenotypes<sup>24,73</sup>, and mutant phenotypes often show dependence on genetic background in model species<sup>74-76</sup>. Also, there is anecdotal evidence for strain-dependence in other protocols, including *in situ* hybridization. Second, appropriate timing of injection is critical for successful RNAi in *D. maculatus*. Somewhat counterintuitively, the segmacoria is most easily penetrated after the cuticle has completely sclerotized, at least two days after eclosion. Therefore, virgin females 4 - 8 days after eclosion should be used. Older females experience lower fecundity than newly eclosed females and thus are not appropriate for injection. Third, injected dsRNA may get pushed out by the inner pressure of the female abdomen. To minimize the possibility of losing a large amount of dsRNA after injection, hold the needle in the abdomen for ~ 5 sec after injection and then remove it slowly (6.2.8). Meanwhile, avoid pressing the female's abdomen during or shortly after injection. To circumvent biased results caused by this issue, inject at least 8 females for each dsRNA to get enough offspring (~ 200 embryos daily) for phenotypic analysis. Fourth, high egg yield is important for providing unbiased data for phenotypic analysis after injection. On average, each *D. maculatus* female produces approximately 35-55 embryos daily. Egg yield depends on population size, female age, humidity, food availability, temperature (data not shown), [comma added] and other environmental factors<sup>54</sup>. Usually, females lay more at 30 °C than 25 °C. Fifth, unhatched embryos can be cannibalized by hatched larvae. As hatched larvae are usually wild-type-like or only mildly affected, while unhatched embryos are usually more severely affected, this habit of *D.*

*maculatus* larvae can cause biased results in a quantitative phenotypic analysis. Therefore, removal of hatched larvae as early as possible is strongly recommended.

Our lab has focused on *D. maculatus* segmentation, although many aspects of this species- including physiology, ecology, and pest control- are of great interest. For studying embryogenesis and segmentation, a series of darkly pigmented stripes on the dorsal side of *D. maculatus* larvae can serve as a natural marker for abnormal development. Also, characteristic setae rooted on the pigmented stripes of larvae can be used as an indication of segments. These morphological features, together with the finding that mildly or moderately affected embryos can survive to hatching, are advantages of the *D. maculatus* model to study the mechanisms involved in patterning the basic body plan.

Finally, the importance of carrying out highly controlled experiments-including a negative control such as *gfp* dsRNA and testing two non-overlapping target regions for each gene-is critical to avoid misinterpretation due to effects of injection per se and (deleted to) off-target effects. For *D. maculatus*, 4 - 6 µg (2 µl of 2 or 3 µg/µl) dsRNA were injected into each female and the dsRNA was 200-250 bp long. Amounts and other details of the protocol may need to be optimized if targeting genes functioning later in development or in different physiological/metabolic processes. Previous discoveries showed that RNAi effects can be passed on to subsequent generations beyond the F1 generation in *C. elegans*<sup>15</sup>. A minority of hatched *D. maculatus* larvae with segmentation defects due to RNAi can survive until adulthood and can reproduce. Preliminary experiments failed to reveal obvious defects in the F2 generation. Future studies may reveal transgenerational effects of RNAi in this species.

## Disclosures

The authors have nothing to disclose.

## Acknowledgements

We thank Drs. Alison Heffer and Yong Lu for setting up the microinjection apparatus and sharing their invaluable knowledge and experience with insect RNAi. This work was supported by the National Institutes of Health (R01GM113230 to L.P.).

## References

1. Fire, A. *et al.* Potent and specific genetic interference by double-stranded RNA in *Caenorhabditis elegans*. *Nature*. **391**, 806-811 (1998).
2. Wianny, F., & Zernicka-Goetz, M. Specific interference with gene function by double-stranded RNA in early mouse development. *Nat Cell Biol*. **2**, 70-75 (2000).
3. Svoboda, P., Stein, P., Hayashi, H., & Schultz, R. M. Selective reduction of dormant maternal mRNAs in mouse oocytes by RNA interference. *Development*. **127**, 4147-4156 (2000).
4. Zimmermann, T. S. *et al.* RNAi-mediated gene silencing in non-human primates. *Nature*. **441**, 111-114 (2006).
5. Kennerdell, J. R., & Carthew, R. W. Use of dsRNA-mediated genetic interference to demonstrate that *frizzled* and *frizzled 2* act in the *wingless* pathway. *Cell*. **95**, 1017-1026 (1998).
6. Cogoni, C. *et al.* Transgene silencing of the *al-1* gene in vegetative cells of *Neurospora* is mediated by a cytoplasmic effector and does not depend on DNA-DNA interactions or DNA methylation. *EMBO J*. **15**, 3153-3163 (1996).
7. Napoli, C., Lemieux, C., & Jorgensen, R. Introduction of a Chimeric Chalcone Synthase Gene into *Petunia* Results in Reversible Co-Suppression of Homologous Genes in trans. *Plant Cell*. **2**, 279-289 (1990).
8. Roessel, P., & Brand, A. H. Spreading silence with Sid. *Genome Biol*. **5**, 208 (2004).
9. Grishok, A. RNAi mechanisms in *Caenorhabditis elegans*. *FEBS Lett*. **579**, 5932-5939 (2005).
10. Jose, A. M., & Hunter, C. P. Transport of sequence-specific RNA interference information between cells. *Annu Rev Genet*. **41**, 305-330 (2007).
11. Hannon, G. J. RNA interference. *Nature*. **418**, 244-251 (2002).
12. Hammond, S. M., Caudy, A. A., & Hannon, G. J. Post-transcriptional gene silencing by double-stranded RNA. *Nat Rev Genet*. **2**, 110-119 (2001).
13. Dorsett, Y., & Tuschl, T. siRNAs: applications in functional genomics and potential as therapeutics. *Nat Rev Drug Discov*. **3**, 318-329 (2004).
14. Agrawal, N. *et al.* RNA interference: biology, mechanism, and applications. *Microbiol Mol Biol Rev*. **67**, 657-685 (2003).
15. Grishok, A., Tabara, H., & Mello, C. C. Genetic requirements for inheritance of RNAi in *C. elegans*. *Science*. **287**, 2494-2497 (2000).
16. Bucher, G., Scholten, J., & Klingler, M. Parental RNAi in *Tribolium* (Coleoptera). *Curr Biol*. **12**, R85-86 (2002).
17. Timmons, L., & Fire, A. Specific interference by ingested dsRNA. *Nature*. **395**, 854 (1998).
18. Turner, C. T. *et al.* RNA interference in the light brown apple moth, *Epiphyas postvittana* (Walker) induced by double-stranded RNA feeding. *Insect Mol Biol*. **15**, 383-391 (2006).
19. Tabara, H., Grishok, A., & Mello, C. C. RNAi in *C. elegans*: soaking in the genome sequence. *Science*. **282**, 430-431 (1998).
20. Eaton, B. A., Fetter, R. D., & Davis, G. W. Dynactin is necessary for synapse stabilization. *Neuron*. **34**, 729-741 (2002).
21. Travanty, E. A. *et al.* Using RNA interference to develop dengue virus resistance in genetically modified *Aedes aegypti*. *Insect Biochem Mol Biol*. **34**, 607-613 (2004).
22. Whitten, M. M. *et al.* Symbiont-mediated RNA interference in insects. *Proc Biol Sci*. **283** (2016).
23. Schmitt-Engel, C. *et al.* The iBeetle large-scale RNAi screen reveals gene functions for insect development and physiology. *Nat Commun*. **6**, 7822 (2015).
24. Beetle-Base: a database for RNAi phenotypes in the red flour beetle *Tribolium castaneum*. *Nucleic Acids Res*. **43**, D720-725 (2015).
25. Ulrich, J. *et al.* Large scale RNAi screen in *Tribolium* reveals novel target genes for pest control and the proteasome as prime target. *BMC Genomics*. **16**, 674 (2015).
26. Choe, C. P., Miller, S. C., & Brown, S. J. A pair-rule gene circuit defines segments sequentially in the short-germ insect *Tribolium castaneum*. *Proc Natl. Acad. Sci. U. S. A.* **103**, 6560-6564 [pii] 10.1073/pnas.0510440103 (2006).

27. Angelini, D. R., & Kaufman, T. C. Functional analyses in the hemipteran *Oncopeltus fasciatus* reveal conserved and derived aspects of appendage patterning in insects. *Dev Biol.* **271**, 306-321 (2004).
28. Lynch, J. A., Peel, A. D., Drechsler, A., Averof, M., & Roth, S. EGF signaling and the origin of axial polarity among the insects. *Curr Biol.* **20**, 1042-1047 (2010).
29. Tenlen, J. R., McCaskill, S., & Goldstein, B. RNA interference can be used to disrupt gene function in tardigrades. *Dev Genes Evol.* **223**, 171-181 (2013).
30. Quan, G. X., Kanda, T., & Tamura, T. Induction of the *white egg 3* mutant phenotype by injection of the double-stranded RNA of the silkworm *white* gene. *Insect Mol Biol.* **11**, 217-222 (2002).
31. Brown, S. J., Mahaffey, J. P., Lorenzen, M. D., Denell, R. E., & Mahaffey, J. W. Using RNAi to investigate orthologous homeotic gene function during development of distantly related insects. *Evol Dev.* **1**, 11-15 (1999).
32. Lynch, J. A., Brent, A. E., Leaf, D. S., Pultz, M. A., & Desplan, C. Localized maternal *orthodenticle* patterns anterior and posterior in the long germ wasp *Nasonia*. *Nature.* **439**, 728-732 (2006).
33. Liu, P. Z., & Kaufman, T. C. *hunchback* is required for suppression of abdominal identity, and for proper germband growth and segmentation in the intermediate germband insect *Oncopeltus fasciatus*. *Development.* **131**, 1515-1527 (2004).
34. Zhou, X., Wheeler, M. M., Oi, F. M., & Scharf, M. E. RNA interference in the termite *Reticulitermes flavipes* through ingestion of double-stranded RNA. *Insect Biochem Mol Biol.* **38**, 805-815 (2008).
35. Ciudad, L., Piulachs, M. D., & Bellés, X. Systemic RNAi of the cockroach vitellogenin receptor results in a phenotype similar to that of the *Drosophila* *yolkless* mutant. *FEBS J.* **273**, 325-335 (2006).
36. Mito, T. *et al.* Non-canonical functions of *hunchback* in segment patterning of the intermediate germ cricket *Gryllus bimaculatus*. *Development.* **132**, 2069-2079 (2005).
37. Yoon, K. S. *et al.* Brief exposures of human body lice to sublethal amounts of ivermectin over-transcribes detoxification genes involved in tolerance. *Insect Mol Biol.* **20**, 687-699 (2011).
38. Rosenberg, M. I., Brent, A. E., Payre, F., & Desplan, C. Dual mode of embryonic development is highlighted by expression and function of *Nasonia* pair-rule genes. *Elife.* **3**, e01440 (2014).
39. Hasselmann, M. *et al.* Evidence for the evolutionary nascence of a novel sex determination pathway in honeybees. *Nature.* **454**, 519-522 (2008).
40. Shukla, J. N., & Palli, S. R. Sex determination in beetles: production of all male progeny by parental RNAi knockdown of *transformer*. *Sci Rep.* **2**, 602 (2012).
41. Arakane, Y. *et al.* The Tribolium chitin synthase genes *TcCHS1* and *TcCHS2* are specialized for synthesis of epidermal cuticle and midgut peritrophic matrix. *Insect Mol Biol.* **14**, 453-463 (2005).
42. Cruz, J., Mané-Padrós, D., Bellés, X., & Martin, D. Functions of the ecdysone receptor isoform-A in the hemimetabolous insect *Blattella germanica* revealed by systemic RNAi in vivo. *Dev Biol.* **297**, 158-171 (2006).
43. Guidugli, K. R. *et al.* Vitellogenin regulates hormonal dynamics in the worker caste of a eusocial insect. *FEBS Lett.* **579**, 4961-4965 (2005).
44. Zhang, H., Li, H. C., & Miao, X. X. Feasibility, limitation and possible solutions of RNAi-based technology for insect pest control. *Insect Sci.* **20**, 15-30 (2013).
45. Huvenne, H., & Smagghe, G. Mechanisms of dsRNA uptake in insects and potential of RNAi for pest control: a review. *J Insect Physiol.* **56**, 227-235 (2010).
46. Price, D. R., & Gatehouse, J. A. RNAi-mediated crop protection against insects. *Trends Biotechnol.* **26**, 393-400 (2008).
47. Paldi, N. *et al.* Effective gene silencing in a microsporidian parasite associated with honeybee (*Apis mellifera*) colony declines. *Appl Environ Microbiol.* **76**, 5960-5964 (2010).
48. Kanginakudru, S. *et al.* Targeting *ie-1* gene by RNAi induces baculoviral resistance in lepidopteran cell lines and in transgenic silkworms. *Insect Mol Biol.* **16**, 635-644 (2007).
49. Magni, P. A., Voss, S. C., Testi, R., Borrini, M., & Dadour, I. R. A Biological and Procedural Review of Forensically Significant *Dermestes* Species (Coleoptera: Dermestidae). *J Med Entomol.* **52**, 755-769 (2015).
50. Zanetti, N. I., Visciarelli, E. C., & Centeno, N. D. The Effect of Temperature and Laboratory Rearing Conditions on the Development of *Dermestes maculatus* (Coleoptera: Dermestidae). *J Forensic Sci.* (2015).
51. Shaver, B., & Kaufman, P. E. *Common name: hide beetle*. [http://entnemdept.ufl.edu/creatures/misc/beetles/hide\\_beetle.htm](http://entnemdept.ufl.edu/creatures/misc/beetles/hide_beetle.htm) (2009).
52. Veer, V., Negi, B. K., & Rao, K. M. Dermestid beetles and some other insect pests associated with stored silkworm cocoons in India, including a world list of dermestid species found attacking this commodity. *Journal of Stored Products Research.* **32**, 69-89 (1996).
53. Xiang, J., Forrest, I. S., & Pick, L. *Dermestes maculatus*: an intermediate-germ beetle model system for evo-devo. *Evodevo.* **6**, 32 (2015).
54. Fontenot, E. A., Arthur, F. H., & Hartzler, K. L. Oviposition of *Dermestes maculatus* DeGeer, the hide beetle, as affected by biological and environmental conditions. *Journal of Stored Products Research.* **64**, 154-159 (2015).
55. Heffer, A., Grubbs, N., Mahaffey, J., & Pick, L. The evolving role of the orphan nuclear receptor *ftz-f1*, a pair-rule segmentation gene. *Evol Dev.* **15**, 406-417 (2013).
56. Heffer, A., Shultz, J. W., & Pick, L. Surprising flexibility in a conserved Hox transcription factor over 550 million years of evolution. *Proc. Natl. Acad. Sci. U. S. A.* **107**, 18040-18045 [pii] 10.1073/pnas.1010746107 (2010).
57. Wilson, M. J., & Dearden, P. K. Pair-rule gene orthologues have unexpected maternal roles in the honeybee (*Apis mellifera*). *PLoS One.* **7**, e46490 (2012).
58. Dawes, R., Dawson, I., Falciani, F., Tear, G., & Akam, M. *Dax*, a locust Hox gene related to *fushi-tarazu* but showing no pair-rule expression. *Development.* **120**, 1561-1572 (1994).
59. Erezylmaz, D. F., Kelstrup, H. C., & Riddiford, L. M. The nuclear receptor E75A has a novel pair-rule-like function in patterning the milkweed bug, *Oncopeltus fasciatus*. *Dev Biol.* **334**, 300-310 (2009).
60. Stuart, J. J., Brown, S. J., Beeman, R. W., & Denell, R. E. A deficiency of the homeotic complex of the beetle *Tribolium*. *Nature.* **350**, 72-74 (1991).
61. Aranda, M., Marques-Souza, H., Bayer, T., & Tautz, D. The role of the segmentation gene *hairy* in *Tribolium*. *Dev Genes Evol.* **218**, 465-477 (2008).
62. Mito, T. *et al.* *even-skipped* has gap-like, pair-rule-like, and segmental functions in the cricket *Gryllus bimaculatus*, a basal, intermediate germ insect (Orthoptera). *Dev Biol.* **303**, 202-213 (2007).
63. Patel, N. H., Ball, E. E., & Goodman, C. S. Changing role of *even-skipped* during the evolution of insect pattern formation. *Nature.* **357**, 339-342 (1992).

64. Volhard, C., & Wieschaus, E. Mutations affecting segment number and polarity in *Drosophila*. *Nature*. **287**, 795-801 (1980).
65. Wieschaus, E., Nüsslein-Volhard, C., & Kluding, H. Mutations affecting the pattern of the larval cuticle in *Drosophila melanogaster*. II. Zygotic loci on the third chromosome. *Wilhelm Roux's archives of developmental biology*. **193**, 283-295 (1984).
66. Wakimoto, B. T., & Kaufman, T. C. Analysis of larval segmentation in lethal genotypes associated with the Aantennapedia gene complex in *Drosophila melanogaster*. *Dev. Biol.* **81**, 51-64 (1981).
67. Yu, Y. *et al.* The nuclear hormone receptor Ftz-F1 is a cofactor for the *Drosophila* homeodomain protein Ftz. *Nature*. **385**, 552-555 (1997).
68. Volhard, C., Wieschaus, E., & Kluding, H. Mutations affecting the pattern of the larval cuticle in *Drosophila melanogaster*. I. Zygotic loci on the second chromosome. *Wilhelm Roux's archives of developmental biology*. **193**, 267-282 (1984).
69. Wieschaus, E., Nüsslein-Volhard, C., & Jürgens, G. Mutations affecting the pattern of the larval cuticle in *Drosophila melanogaster*. III. Zygotic loci on the X-chromosome and fourth chromosome. *Wilhelm Roux's archives of developmental biology*. **193**, 296-307 (1984).
70. Guichet, A. *et al.* The nuclear receptor homologue Ftz-F1 and the homeodomain protein Ftz are mutually dependent cofactors. *Nature*. **385**, 548-552 (1997).
71. Fontenot, E. A., Arthur, F. H., & Hartzler, K. L. Effect of diet and refugia on development of *Dermestes maculatus* DeGeer reared in a laboratory. *J Pest Sci.* **88**, 113-119 (2014).
72. Yang, Y. *et al.* Biodegradation and Mineralization of Polystyrene by Plastic-Eating Mealworms: Part 1. Chemical and Physical Characterization and Isotopic Tests. *Environ Sci Technol.* **49**, 12080-12086 (2015).
73. Kitzmann, P., Schwirz, J., Schmitt-Engel, C., & Bucher, G. RNAi phenotypes are influenced by the genetic background of the injected strain. *BMC Genomics*. **14**, 5 (2013).
74. Chandler, C. H., Chari, S., Tack, D., & Dworkin, I. Causes and consequences of genetic background effects illuminated by integrative genomic analysis. *Genetics*. **196**, 1321-1336 (2014).
75. Montagutelli, X. Effect of the genetic background on the phenotype of mouse mutations. *J Am Soc Nephrol.* **11 Suppl 16**, S101-105 (2000).
76. Doetschman, T. Influence of genetic background on genetically engineered mouse phenotypes. *Methods Mol Biol.* **530**, 423-433 (2009).